



MONTHLY MEMBERSHIP PROGRESS REPORT

District 322 A

Results as of: 02/28/2019

GMT: SWADESH RANJAN SAHA

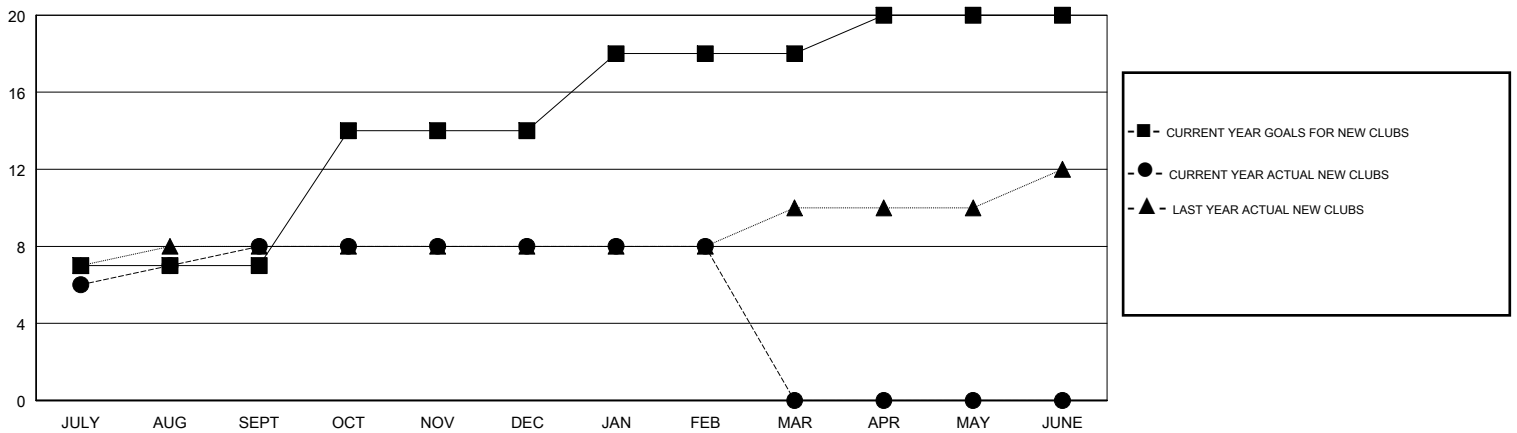
LOCATION INDIA

GMT CA

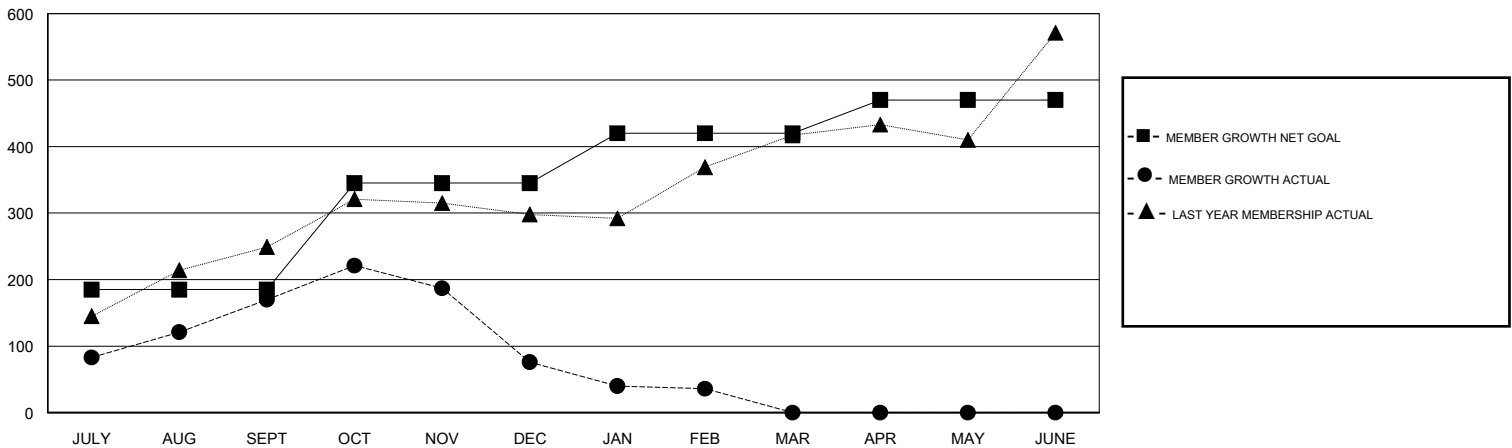
Clubs			
RESULTS FOR 2018-2019			
QUARTER	NEW CLUB GOAL	NEW CLUBS	DROPPED CLUBS
JULY/AUG/SEPT	7	8	1
OCT/NOV/DEC	7	0	3
JAN/FEB/MAR	4	0	2
APR/MAY/JUNE	2	0	0

Members			
RESULTS FOR 2018-2019			
QUARTER	MEMBER GROWTH NET GOAL	MEMBER GROWTH ACTUAL	DROPPED MEMBERS ACTUAL (including transfers)
JULY/AUG/SEPT	185	287	103
OCT/NOV/DEC	160	189	268
JAN/FEB/MAR	75	16	51
APR/MAY/JUNE	50	0	0

GOALS AND ACTUAL NEW CLUBS CUMULATIVE



GOALS AND ACTUAL MEMBERS CUMULATIVE



DROPPED CLUBS: 6	67 CLUBS OF 91 ADDED 1 OR MORE NEW MEMBERS	<u>GENDER DISTRIBUTION</u>	
		MALE	2,467 (69.87%)
		FEMALE	1,064 (30.13%)
		Women Percentage Fiscal Year Goal: 2%	
<u>DROPPED MEMBERS</u>		TOTAL FAMILY UNIT MEMBERS	1,442
DECEASED	7	FAMILY MEMBERS PAYING HALF DUES	745
CLUB CANCELLED	114		
OTHER	301		
TOTAL	422		

[CLICK HERE FOR CUMULATIVE MEMBERSHIP DATA](#)